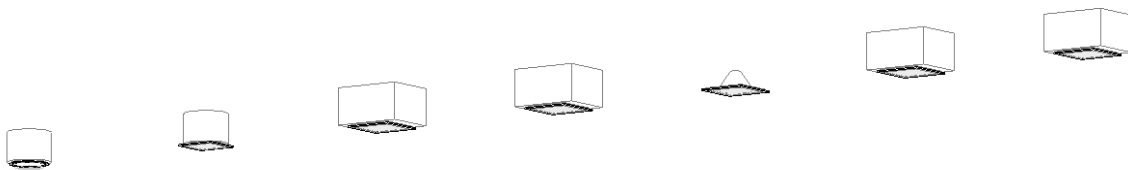


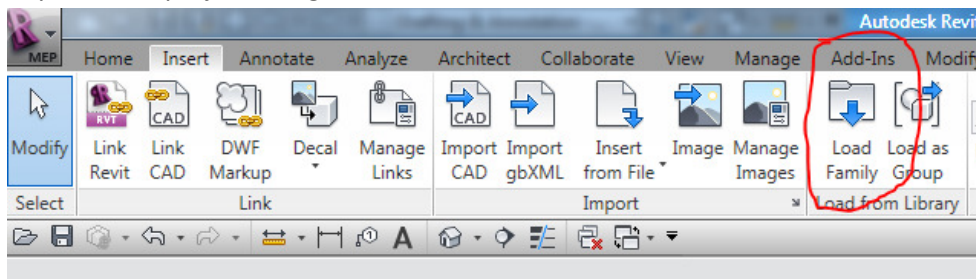
JBL Control 300 Series R15 BIM Family – User Guide

This family builds all speaker products in the JBL Control 300 series, and allows for various grill and backcan options. The .rfa file and the .txt type catalog file must be placed in the same directory in order to work correctly. The family is in the Revit 2015 file format.



To load the family:

- In your Revit project file, go to the Insert tab on the ribbon and select “Load Family”.



- Browse to the directory where you saved the family and select it.
- You should get a pop-up window that lists all of the various speaker models available within the family. Select the models you wish to load into the project. You can use ctrl+click and shift+click for multiple selections, and the dialogue box allows for sorting and filtering by various criteria to find the models you want.
 - If you do not get a pop-up list of speaker models, check to ensure that the family file and catalog file are stored in the same directory and have the same name.

To use the family in your project:

- Find the speaker model you want in the project browser and drag it onto the view you wish to place it in (typically an RCP view).

This is a face-hosted family. This means that you can place the speaker on any face in the project, including ceilings, walls, soffits, etc., and it can be used from within linked model environments.

Note: if you insert the speaker using the 'Place on Work Plane' option and it inserts 'upside down' (i.e. facing up) your work plane was drawn left to right instead of right to left. You can either flip the orientation of the workplane, or delete it and redraw it.

A word about parameters:

This family contains information using shared parameters that are (mostly) compliant with the Infocomm BIM standard. Many of them are self-explanatory, but a few should be noted here:

Weight Product and Weight Dimensional: These parameters are intended to represent the net weight and the shipping weight of the speaker. Weight in the families is given in pounds, however the Infocomm BIM standard does not give any indication of units (the parameter is just a number parameter). Revit will not automatically convert these values between Imperial and Metric units as it does not know which units are being used.

For more information on the Infocomm BIM parameters go to www.infocomm.org

Show Symbol: This parameter turns the speaker symbol on and off in RCP views. When the symbol is displayed, the actual face of the speaker is not shown. This symbol is a type parameter, so it toggles viewing for every speaker of the same model throughout the project.

A word about tolerances:

Due to the high number of small protrusions on these speakers, and other limitations, all dimensions are approximate.